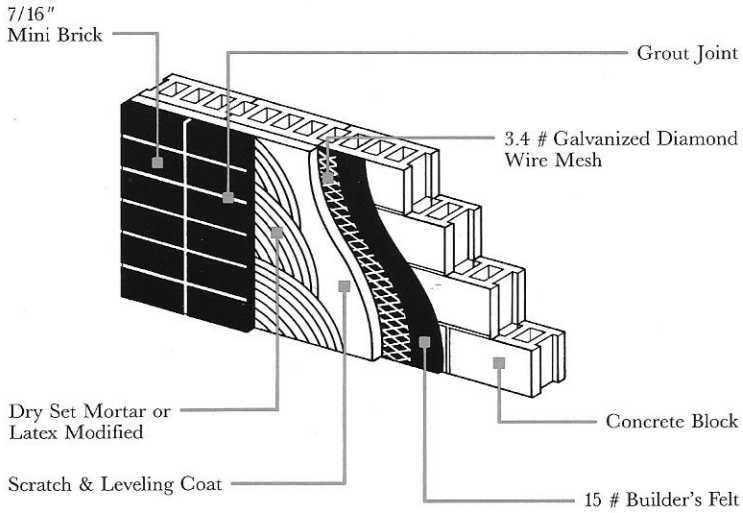


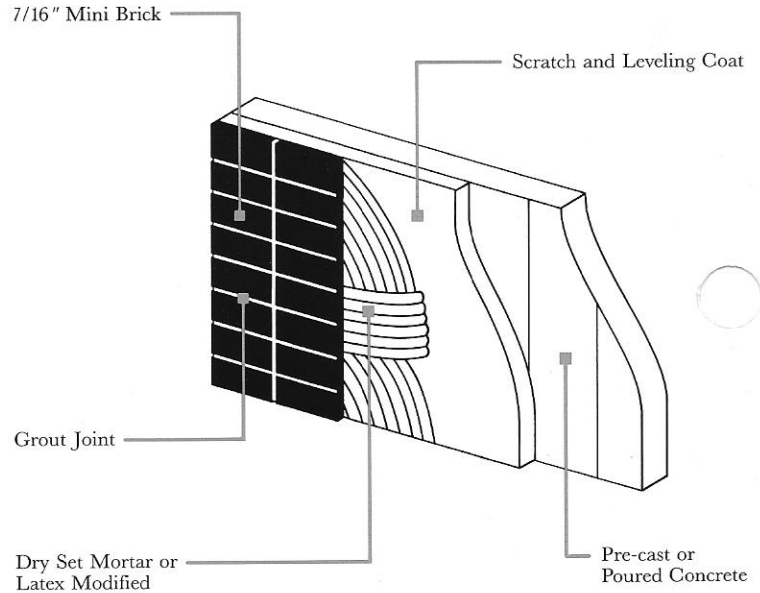
MORTAR BED SYSTEM

Concrete Block Infill Wall or Existing Masonry



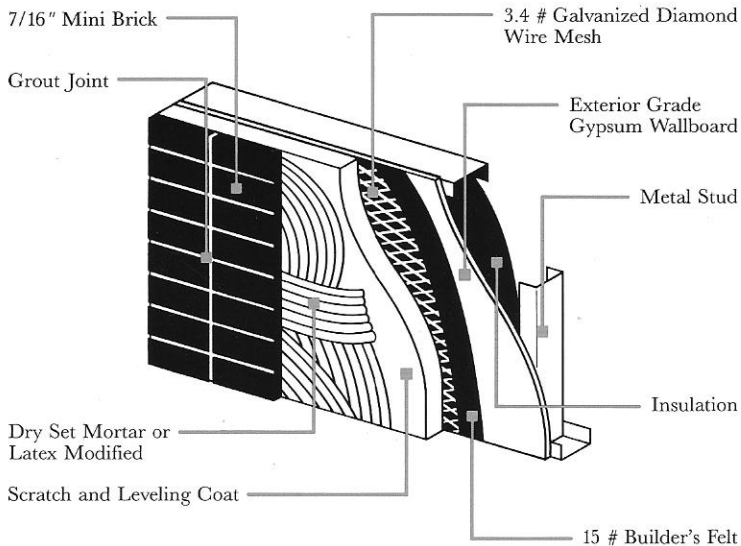
THIN BED SYSTEM WITH LEVELING COAT

Pre-Cast or Poured in Place Concrete



MORTAR BED SYSTEM

Pre-Fabricated or On-Site Panelization



PANEL SYSTEM

Pre-Fabricated or On-Site Panelization

